

> B-FV4

> THE COMPLETE SOLUTION

Toshiba offers a total solution including a full range of approved media, labels, ribbons and cleaning products. A European support network in the majority of European countries provides essential peace of mind that - once installed - the printers will be serviced and maintained by experienced engineers and service staff.

> GREEN CREDENTIALS



Toshiba is committed to the design and manufacture of products that reduce environmental impact, creating environmental quality standards for each product and prescribing them with the highest levels required by the industry.

<http://www.toshibatec.co.jp/en/csr>

> CUSTOMER BENEFITS

- Compact and stylish
- Range of interfaces as standard
- Emulation capabilities
- Ease of use and maintenance
- Low energy consumption
- Longer 300m ribbon
- Managed printer services

The Toshiba B-FV4 - Easy To Use and Cost-effective Desktop Labelling Solution.



> B-FV4 DESKTOPS

Your Office Assistant - Flexible For All Printing Applications

	B-FV4D		B-FV4T	
	GS & COURIER	TS	GS	TS
CHARACTERISTICS				
Print Method	Direct thermal		Direct thermal / thermal transfer	
Dimensions	184 (W) x 226 (D) x 166 (H) mm Label w/o Liner & Courier models: 184 (W) x 226 (D) x 199 (H) mm		220 (W) x 279 (D) x 182 (H) mm	
Weight	1.8kg		2.4kg	
User Interface	x2 LED (colours: green, amber, red)			
Operating Temp./Humidity	5 to 40°C (25 to 85% non-condensing RH)			
Power Supply	AC adaptor (60W)		AC adaptor (90W)	
PRINT				
Resolution	203dpi	300dpi	203dpi	300dpi
Speed (max.)	Up to 152.4mm/s	Up to 101.6mm/s	Up to 152.4mm/s	Up to 101.6mm/s
Speed (peel-off)	Up to 76.2mm/s			
Print Width (max.)	108mm	105.7mm	108mm	105.7mm
Print Length (max.)	995mm	453.2mm	995mm	453.2mm
Print Length (peel-off; max.)	Up to 152.4mm continuous printing			
RIBBON				
Width	-		40 to 110mm	
Length	-		300m (Toshiba approved ribbon)	
MEDIA				
Alignment	Centred			
Media (backing paper) Width	25.4 to 118mm			
Label Thickness	0.06 to 0.19mm			
Media Shape	Roll-fed, fanfold, die-cut, continuous, tag stock, receipt			
Inner Media Roll Diameter	25.4 or 38.1mm (optional: 76.2mm)			
Outer Media Roll Diameter	Standard: 127.0mm (max.), optional: 203.2mm (max.)			
SOFTWARE & CONNECTIVITY				
Emulations	ZPL II (EPL 2, DPL & IPL supported in future). (IPL - 203dpi only)			
Printer Driver	Windows: 8 (32 bit/64 bit), 7 (32 bit/64 bit), Vista, XP, Server 2008 R2, Server 2008, Server 2003			
Host Interface	Type 1: USB 2.0, LAN 10/100 Base (excl. China) Type 2: USB 2.0, LAN 10/100 Base, RS-232C (max. 115,200 bps) Type 3: USB 2.0, IEEE1284 Courier models: USB 2.0, LAN 10/100 Base, RS-232C (max. 115,200 bps)			
OPTIONS				
	Peel-off module (standard on Courier model) - full cutter module* - partial cutter module** - external 203mm OD media stand* - Wi AN I/F (802.11b/g)*** or Bluetooth I/F***			

*n/a on Label w/o Liner model **n/a on Label w/o Liner & Courier models ***coming soon

Please note: the B-FV4D is still under development, as noted in the specifications listed. The specifications are subject to change without prior notice. Please contact your sales representative for the latest update.

Your TOSHIBA Dealer:

DESIGNHUT.CO.UK - JN1041UK

All company and/or product names are trademarks and/or registered trademarks of their respective owners. All features and specifications described in this brochure are subject to change without notice.
©2014 TOSHIBA TEC CORPORATION. All rights reserved.
R140611P0200-TTEC



The B-FV4 desktop printer series can seamlessly integrate into existing systems, whatever the specification or printing requirement.

Designed to be compact, stylish and unobtrusive, yet powerful and flexible for any environment and application - one size really does fit all!



TOSHIBA

Leading Innovation >>>

TOSHIBA

TOSHIBA TEC EUROPE RETAIL INFORMATION SYSTEMS

www.toshibatec-eu.com

HQ Tel. +32 (0)2 410 21 00
info@toshibatec-eu.com
www.toshibatec-eu.com

BE Tel. +32 (0)2 410 21 00
retail@toshibatec-eu.be
www.toshibatec-eu.be

DE Tel. +49 (0)2 15 18 38 01
marketing@toshibatec-eu.de
www.toshibatec-eu.de

FR Tel. +33 (0)1 58 07 20 00
info@toshibatec-eu.fr
www.toshibatec-eu.fr

IE Tel. +353 (0)1 465 22 20
info@toshibatec-eu.ie
www.toshibatec-eu.co.uk

AT Tel. +49 (0)2 15 18 38 01
marketing@toshibatec-eu.de
www.toshibatec-eu.de

PT Tel. +351 214 222 064
comercial@toshibatec-eu.pt
www.toshibatec-eu.pt

ES Tel. +34 (0)91 502 15 90
marketing@toshibatec-eu.es
www.toshibatec-eu.es

UK Tel. +44 (0)870 890 7200
marketing@toshibatec-eu.co.uk
www.toshibatec-eu.co.uk

GROUP Companies

TOSHIBA TEC Netherlands Retail Information Systems b.v.
Tel. +31 (0)33 453 81 00
info@toshibatec-eu.nl
www.toshibatec-eu.nl

TEC Polska Sp. z o.o.
Tel. +48 (0)22 501 67 70
info@toshibatec-eu.pl
www.toshibatec-eu.pl

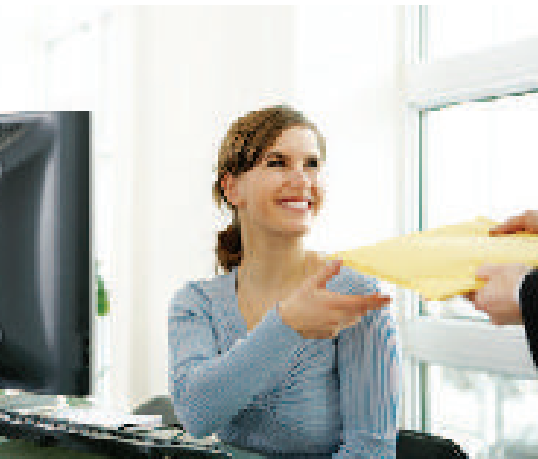
TEC Italia, S.r.l. Gruppo Toshiba
Tel. +39 (0)2 48 60 24 61
info@toshibatec.it
www.toshibatec-eu.it

B-FV4

> STYLISH, ROBUST & POWERFUL

THE IDEAL OFFICE ASSISTANT FOR ALL YOUR PRINTING REQUIREMENTS

One compact package with versatile connectivity - seamless to integrate and so easy to use.



> THE PERFECT FIT

We've designed the B-FV4 printer series to be the perfect silent office helper, small enough to fit into the tightest of spaces with the flexibility to integrate into any environment. Stylish and sleek yet rugged and powerful, with print speeds of up to 6 ips, it handles even demanding printing applications with ease.

(13% faster for the first label print and 8% faster for batch printing compared with Toshiba B-EV series.)

OFFICE ENVIRONMENT

general office printing - asset label printing



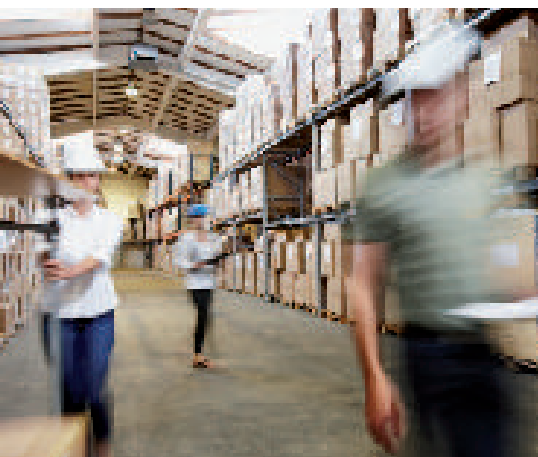
> MULTI-LINGUAL

Whatever the current application, the B-FV4 series can 'talk your language', allowing straightforward integration into existing systems. With a whole host of connectivity options as standard, this impressively flexible printer really does have 'everything on board' to manage the most diverse printing requirements.

One size fits all - whether direct thermal printing or using thermal ribbons, simply choose the options to suit your application.

HEALTHCARE

wristband - specimen label - pill bottle label printing



> DESIGNED FOR THE USER

For ease of use and maintenance, the B-FV4 series has been designed with the user in mind. Drop-in paper loading allows quick and easy changes to media, and critical parts can be upgraded with a snap-in printhead and platen assembly.

Combined with the all-important Toshiba reliability, the B-FV4 is a rugged and robust workhorse for any environment.

TRANSPORTATION & LOGISTICS

shipping label - warehouse label - pallet label - ticket printing



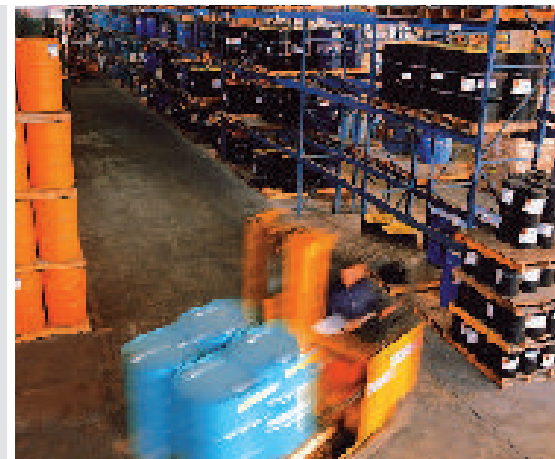
> COST-EFFECTIVE MEDIA

For a low cost of ownership the B-FV4 thermal transfer printer is available with a 300m ribbon, improving workflow efficiency with less media changes required.

Ribbons are available in various grades and qualities and are compatible with the current Toshiba desktop series, allowing for a seamless upgrade and flexibility to use existing media stocks before converting to the lower cost 300m ribbon (for both 1/2" or 1" core).

INDUSTRIAL MANUFACTURING

parts label - picking label printing



> FLEXIBILITY

A variety of both built-in and optional features provides true versatility to support a wide range of local and remote applications.

Additional features include:

- Managed print services
- USB memory support
- 203 or 300dpi variants
- Cutter options
- Peel-off module
- Emulations/Basic Command Interpreter (BCI)

RETAIL

shelf label - mark down label - product label printing



> COURIER/POSTAL

With our in-depth understanding of the unique challenges of courier and postal services, we have developed two models specifically configured for these uses. Both housed in sleek black shells with built-in power supplies, our 'Label w/o Liner' model uses more compact label rolls without any backing paper waste. Combined with impressively low power consumption, our specialist models give you a truly green solution.

COURIER/POSTAL

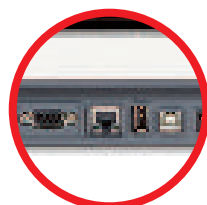
stamp label - shipping label printing



TOSHIBA
Leading Innovation >>>



So easy to use



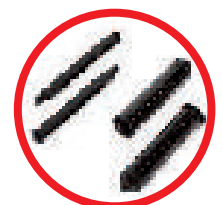
Choice of
interfaces



Your office
assistant



300m ribbon



Ribbon flexibility
(both 1/2" or 1" cores)